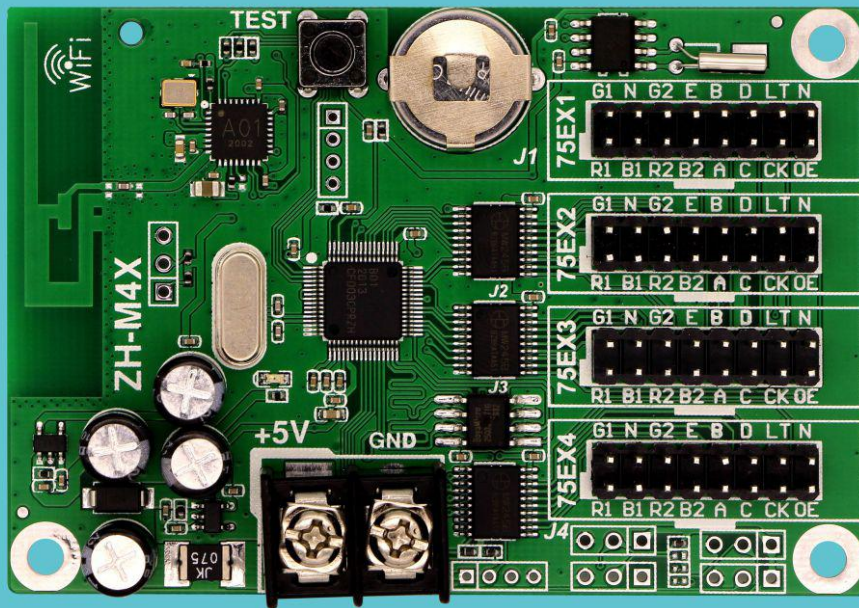




ZH LED Control System



ZH-M4X Product Specification





ZH-M4X Specification

I. Function Introduction:

1. **Multi-platform control:** Support PC, Android and IOS.
2. **Fast transmission rate:** Use HTTP protocol and data compression, data transmission is smaller and faster.
3. **Background transmission efficient:** Proprietary algorithm, small data size, higher efficiency.
4. **Simple operation:** Simple UI design, debugging and use do not affect each other, and zero learning cost.
5. **Multilayer overlay processing:** Background and foreground do not affect operational efficiency.
6. **WiFi communication:** Subtitle data can be transmitted through WiFi.
7. **Support various indoor and outdoor unit board:** HUB75E interface match with various kind of the unit board.
8. **Support module manufacturers' line type loading:** Support direct selection of module manufacturers' line type.
9. **Support module line type automatic scanning:** Line type automatic scanning.
10. **Support program timing play, fixed time play, designated time play:** The program can play at will.
11. **Support rainbow word, background, pictures and other materials:** Support all kinds of common materials.
12. **Support user password function:** In addition to WIFI password, the screen can be encrypted twice, which is more secure to use.
13. **Support special chips:** Such as ICN2038S.
14. **Support external interface extension:** Temperature.

II. Detail Parameters:

Operating system: PC device support: XP, Win7, Win8 and Win10. Mobile terminal support: Android(Android), IOS.
Display effect: support software dynamic background, magic run side overlay play.
Running type: phantom running, support the whole screen running/multi partition running/custom running.
Play type: support multi-program sequential play/timing play/fixed-length play/time-sharing play/lock single program play.
Adaptive range: support various 75E interface unit board.
Supporting software PC side : LED player V5 Mobile terminal: LED Mobile (color), support multi-program editing/multi-area display/multi-language version.
Area type: subtitle/time/analog dial/temperature.
Communication mode: WIFI, stable speed.



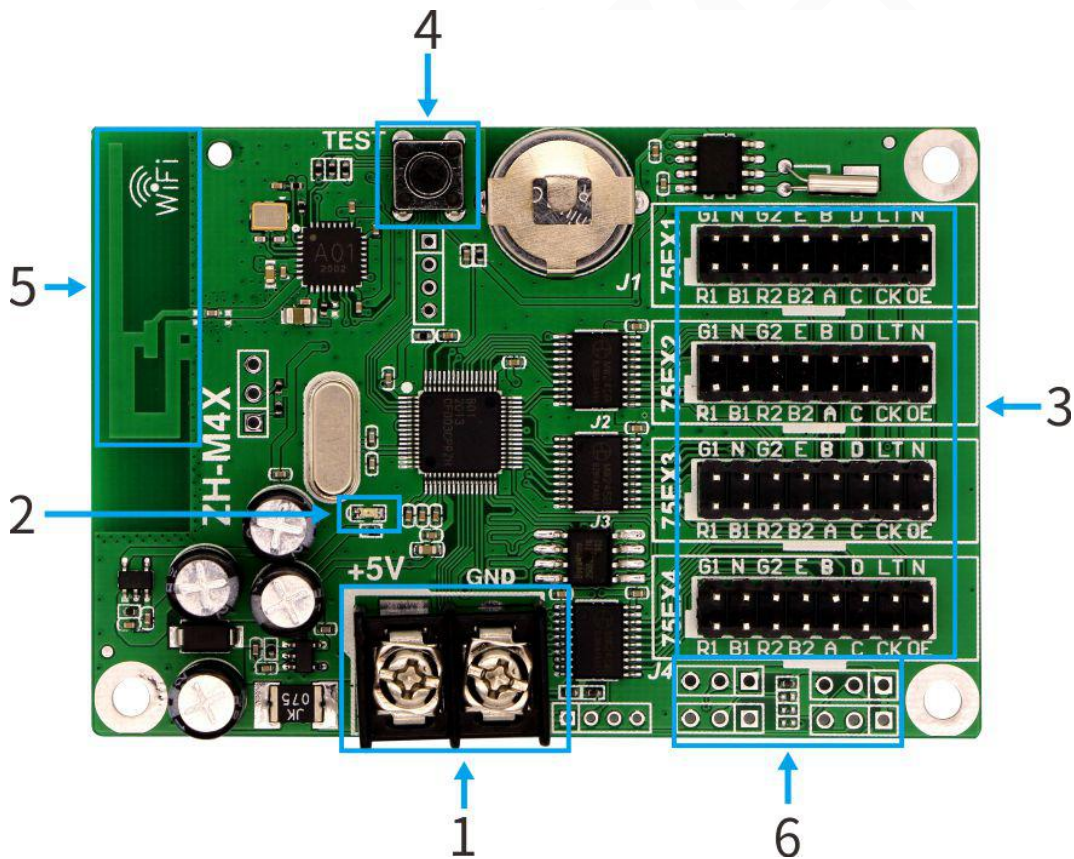
ZH LED Display Control System

Sensor: Temperature
Clock: support multinational clock play, support jet lag settings.
Working voltage: + 4.5v ~6V
Maximum power consumption: <1W
Operating temperature: -30°C~70°C

III. Loading Area:

Model	HUB Port	Loading Area	Storage
ZH-M4X	4*hub 75E	384*64 192*128 96*256 max width: 512; max height: 256	4M

IV. Hardware Introduction:



A. Interface Function

NO.	Name:	Function:	Note:
1	Power input	Link DC5V power,offer power to card	
2	Power indicator	Power state	Red color always light



ZH LED Display Control System

3	HUB75E port	75E data port	
4	Test button	Check WIFI SSID and test mode	
5	WIFI and antenna	Offer WIFI signal	
6	Extension port	Sensor and so	

B. Indicator:

Power indicator: constant light indicates power supply;

C. HUB75E:

Data signal				Scan signal		Control signal	
GD1	Blank	GD2	E	B	D	LAT	GND
2	4	6	8	10	12	14	16
1	3	5	7	9	11	13	15
RD1	BD1	RD2	BD2	A	C	CLK	OE
Data signal				Scan signal		Control signal	

Note: HUB75 interface with scanning E signal, support 32 scanning display screen.

D. External pins

G	Sensor GND
S1/S2/S3/S4	Sensor I/O
5V	Sensor power line

V. Hardware Diagram:

Unit: mm

