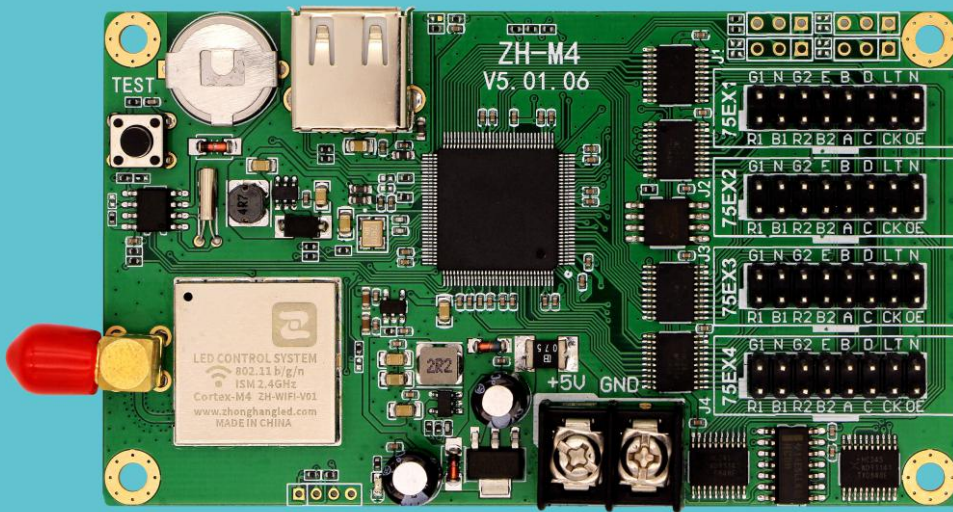




®

ZH LED Control System



# ZH-M4 Product Specification





## ZH-M4 Specification

### I. Function Introduction:

1. **Multi-platform control:** Support PC, Android and IOS.
2. **Fast transmission rate:** Use HTTP protocol and data compression, data transmission is smaller and faster.
3. **Background transmission efficient:** Proprietary algorithm, small data size, higher efficiency.
4. **Simple operation:** Simple UI design, debugging and use do not affect each other, and zero learning cost.
5. **Multilayer overlay processing:** Background and foreground do not affect operational efficiency.
6. **WiFi and U disk dual communication:** Subtitle data can be transmitted through WiFi and U disk.
7. **Support various indoor and outdoor unit board:** HUB75E interface match with various kind of the unit board.
8. **Support module manufacturers' line type loading:** Support direct selection of module manufacturers' line type.
9. **Support module line type automatic scanning:** Line type automatic scanning.
10. **Support program timing play, fixed time play, designated time play:** The program can play at will.
11. **Support rainbow word, background, pictures and other materials:** Support all kinds of common materials.
12. **Support user password function:** In addition to WIFI password, the screen can be encrypted twice, which is more secure to use.
13. **Support special chips:** Such as ICN2038S.
14. **Support external interface extension:** Such as temperature, humidity sensor.

### II. Detail Parameters

<b>Operating system:</b> <b>PC device support:</b> XP, Win7, Win8 and Win10. <b>Mobile terminal support:</b> Android(Android), IOS.
<b>Display effect:</b> support software dynamic background, magic run side overlay play.
<b>Running type:</b> phantom running, support the whole screen running/multi partition running/custom running.
<b>Play type:</b> support multi-program sequential play/timing play/fixed-length play/time-sharing play/lock single program play.
<b>Adaptive range:</b> support various 75E interface unit board.



## ZH LED Display Control System

### Supporting software

PC side : LED player V5

Mobile terminal: LED Mobile (color), support multi-program editing/multi-area display/multi-language version.

**Area type:** subtitle/time/analog dial/temperature.

**Communication mode:** WIFI, stable speed; U disk, plug and play.

**Sensor:** temperature, humidity.

**Clock:** support multinational clock play, support jet lag Settings.

**Working voltage:** + 4.5v ~6V

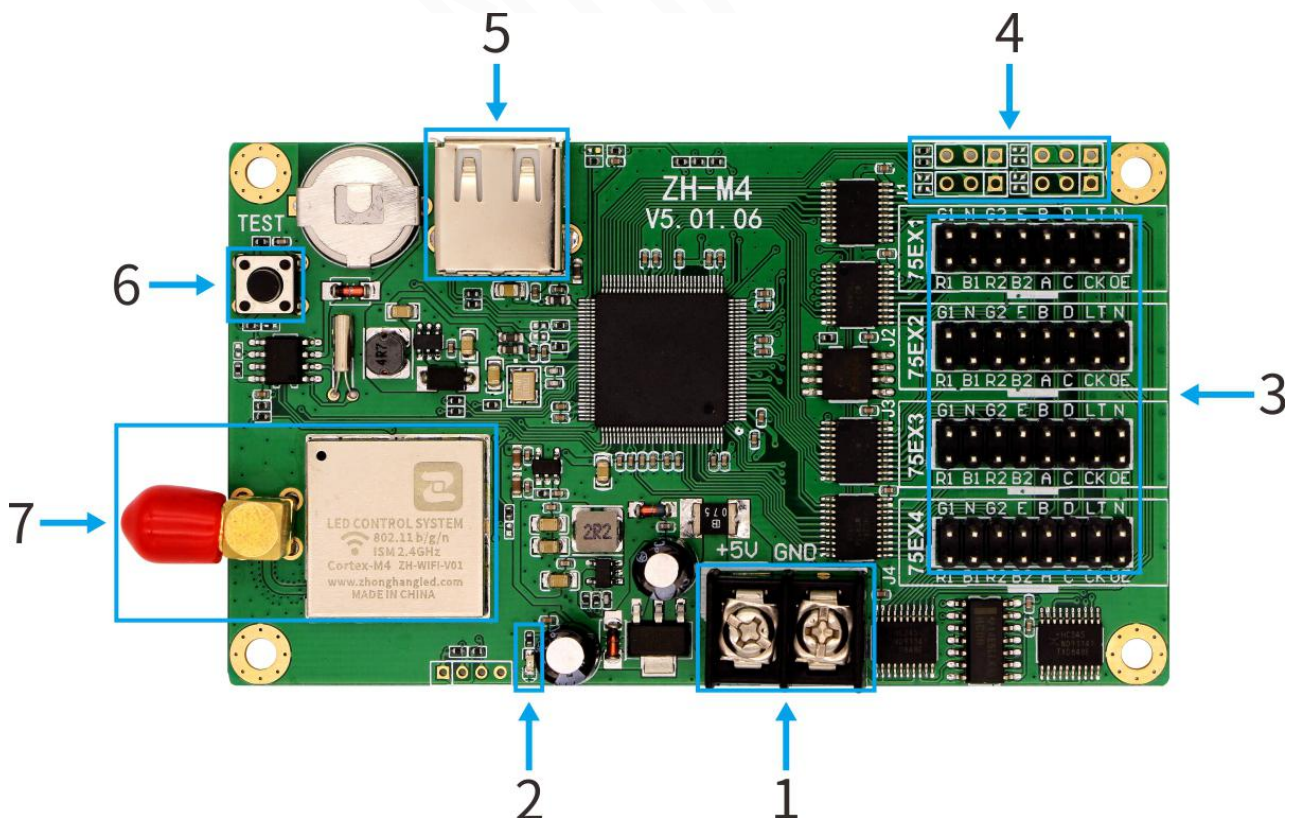
**Maximum power consumption:** <1W

**Operating temperature:** -30°C~70°C

## III. Loading Area

Model	HUB Port	Loading Area	Storage
ZH-M4	4*hub 75E	1024*64 512*128 256*256 max width: 1024; max height: 256	8M

## IV. Hardware Introduction:





# ZH LED Display Control System

## A、 Interface Function

NO.	Name:	Function:	Note:
1	Power input	Link DC5V power,offer power to card	
2	Power indicator	Power state	Red color always light
3	HUB75E port	75E data port	
4	Extension port	Temperature sensor and other extension interface	
5	USB port	Transfer USB data	
6	Test button	Check WIFI SSID and test mode	
7	WIFI and antenna	Offer WIFI signal	

## B、 Indicator:

Power indicator: constant light indicates power supply;

## C、 HUB75E:

Data signal				Scan signal		Control signal	
GD1	Blank	GD2	E	B	D	LAT	GND
2	4	6	8	10	12	14	16
1	3	5	7	9	11	13	15
RD1	BD1	RD2	BD2	A	C	CLK	OE
Data signal				Scan signal		Control signal	

Note: HUB75 interface with scanning E signal, support 32 scanning display screen.

## D、 External pins

G	Sensor GND
S1/S2/S3/S4	Sensor I/O
5V	Sensor power line

## V. Hardware Diagram:

Unit: mm



# ZH LED Display Control System

