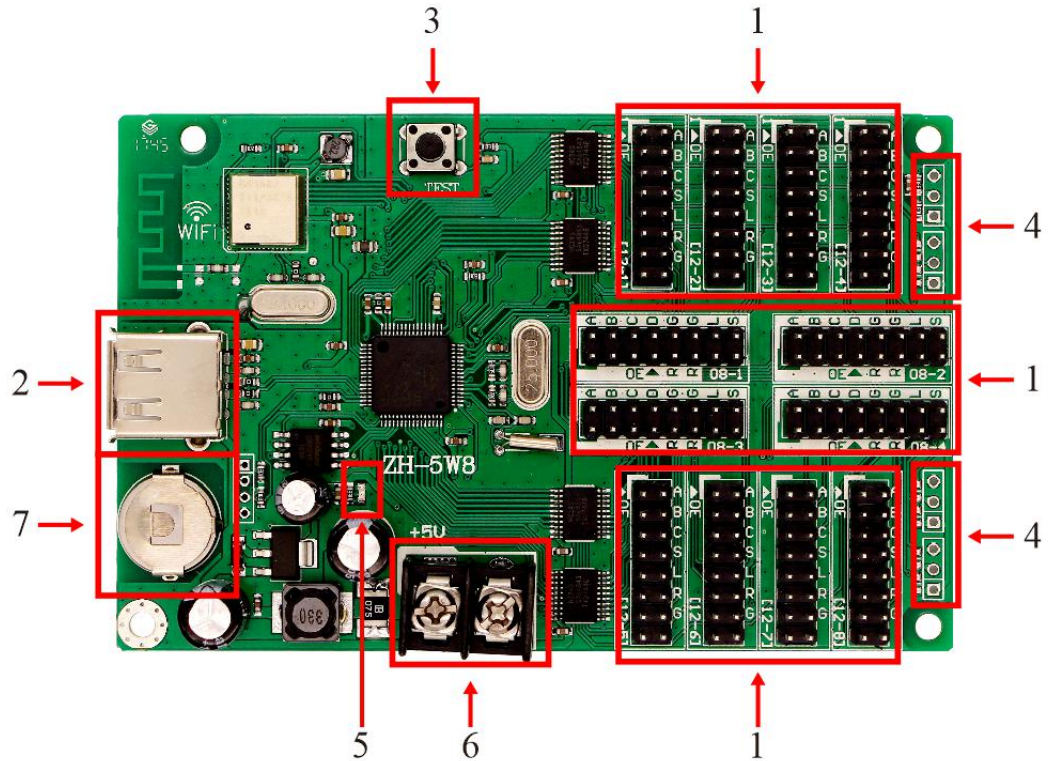




ZH-5W8 LED Display Controller Specification

Hardware:



Item	Interface Name	Description
1	Hub Port	Connect hub board
2	USB Port	USB Port
3	Multi-function Button	1.Test LED panel 2.Reset to defaults
4	Sensor Port	Connect temperature sensor
5	5V Power Indicator	Indicating power state
6	5V Power Port	Voltage range support 3.2V-5.5V
7	RTC Button Battery	RTC battery, Voltage 3V



Parameter:

PC Software	LED Control System V5.1.15
Mobile Phone App	ZH Mobile
Pixel	32*2560 128*640
Hub Port	8*hub12 4*hub08
Communication Port	WIFI+USB
Support Module Type	All kinds of single/dual color LED display modules
Software Function	Multi-language/Multi-program/Multi-partition
Program Number	65536 programs, 16 partitions for each program.
Play Type	Text, Graphic, Animation, Time, Clock, Timer, Temperature.
Running Side	Over 10 kinds of running sides, support single partition running side.
Clock Display	Digital clock, Analog clock, Positive timing, Negative timing.
Memory	4 MByte
Sensor	Temperature sensor
Sensor Model	DS18B20
Brightness Adjustment	15 levels brightness, automatically adjust by time.
Remote Switch	Support timing turn on/off, turn on/off by software.
Working Voltage	3.2V-5.5V
Max Power	≤0.5W
Working Temperature	-30°C~70°C
Secondary Development	Offer development protocol

Sensor Connection Diagram:

