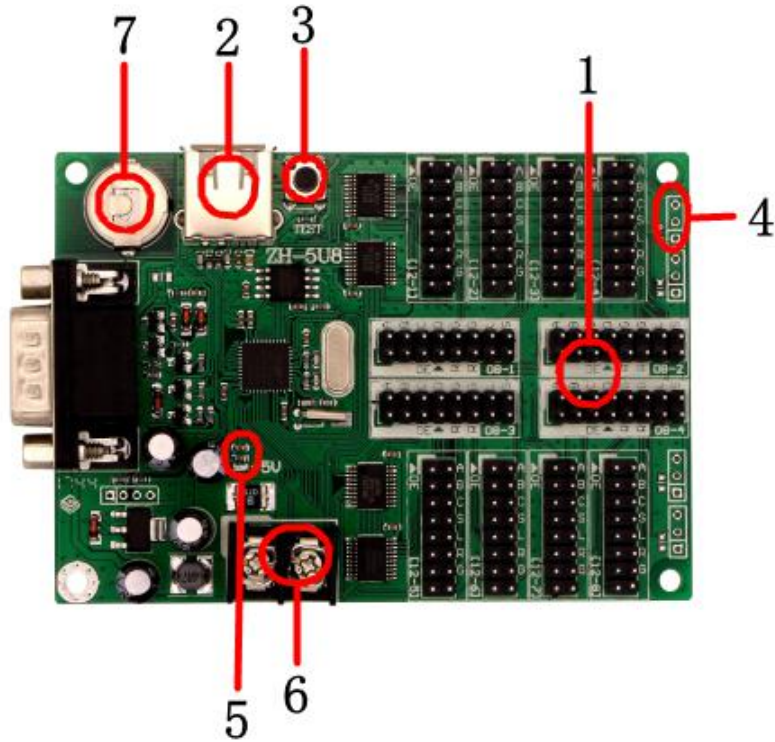




ZH-5U8 LED Display Controller Specification

Hardware:



| Item | Interface Name | Description |
|------|-----------------------|---|
| 1 | Hub Port | Connect hub board |
| 2 | USB Port | USB Port |
| 3 | Multi-function Button | 1.Test LED panel 2.Reset to defaults |
| 4 | Sensor Port | Connect temperature sensor |
| 5 | 5V Power Indicator | Indicating power state |
| 6 | 5V Power Port | Voltage range support 3.2V-5.5V |
| 7 | RTC Button Battery | RTC battery, Voltage 3V |

Parameter:



| | |
|------------------------------|---|
| PC Software | LED Control System V5.1.15 |
| Pixel | 32*2560 128*640 |
| Hub Port | 8*hub12 4*hub08 |
| Communication Port | USB+RS232 |
| Support Module Type | All kinds of single/dual color LED display modules |
| Software Function | Multi-language/Multi-program/Multi-partition |
| Program Number | 65536 programs, 16 partitions for each program. |
| Play Type | Text, Graphic, Animation, Time, Clock, Timer, Temperature. |
| Running Side | Over 10 kinds of running sides, support single partition running side. |
| Clock Display | Digital clock, Analog clock, Positive timing, Negative timing. |
| Memory | 4 MByte |
| Sensor | Temperature sensor |
| Sensor Model | DS18B20 |
| Brightness Adjustment | 15 levels brightness, automatically adjust by time. |
| Remote Switch | Support timing turn on/off, turn on/off by software. |
| Working Voltage | 3.2V-5.5V |
| Max Power | ≤0.5W |
| Working Temperature | -30°C~70°C |
| Secondary Development | Offer development protocol |

Sensor Connection Diagram:



ZH Controller Temperature Sensor Connection Diagram

