

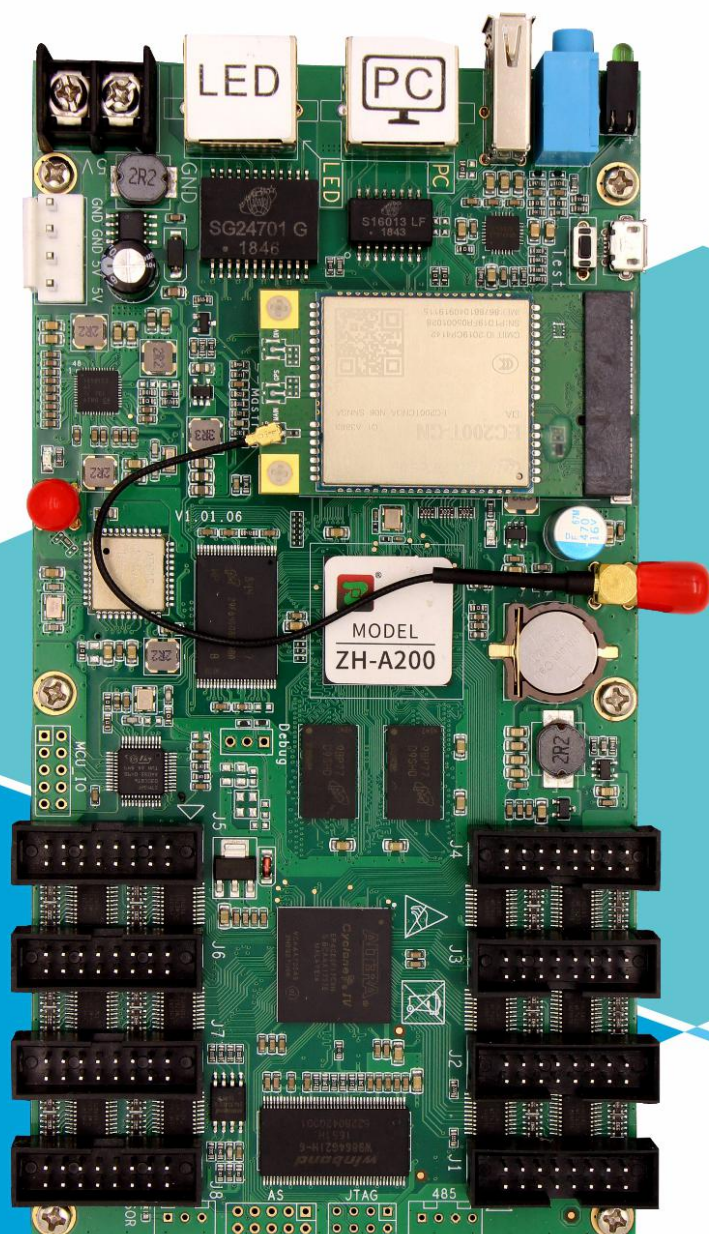


®

ZH LED Display Control System

# ZH-A200

## Full Color Asynchronous Card Specification





**ZH LED Display Control System**

## **ZH-A200 Full Color Asynchronous Card Specification--V1.1 2018.6.8**

### **I. Function Introduction:**

**ZH-A200 belongs to full color series asynchronous card, its functions are as follows:**

1. Adopt the same refresh technology as synchronous receiving card, with the advantages of high fresh, high gray and high brightness of receiving card ;
2. Support cascading receiving cards, support any size screen;
3. Support access to Internet management such as 3G/4G/Wi-Fi;
4. Support HD video hard decoding;
5. Support video and picture directly display of U disk/TF card;
6. Adopt the sending card + receiving card structure, the screen adjustment method is compatible with full color, which is convenient and quick;
7. Support remote cluster release management system;
8. Support temperature, humidity, wind direction, wind speed, PM2.5, dust, noise, smoke sensor;
9. Support weather forecast;



## II. Basic Function Parameters

### System Parameters:

CPU	Dual-core A9, 1.8GHz
System Internal Storage	1G
Storage	8G
Control Area	640*480 Maximum Width: 1024, Maximum Height: 1024
Support Resolution	256*1024, 320*960, 384*800, 400*768, 480*640, 512*600, 640*480 768*400, 896*342, 1024*300

### Communication Port:

1. TF card port, support external expansion of storage space (optional);
2. Support WIFI hotspots;
3. Support U disk port;
4. Support 100M Network;
5. Support server cluster;
6. Support 3G/4G communication(optional);

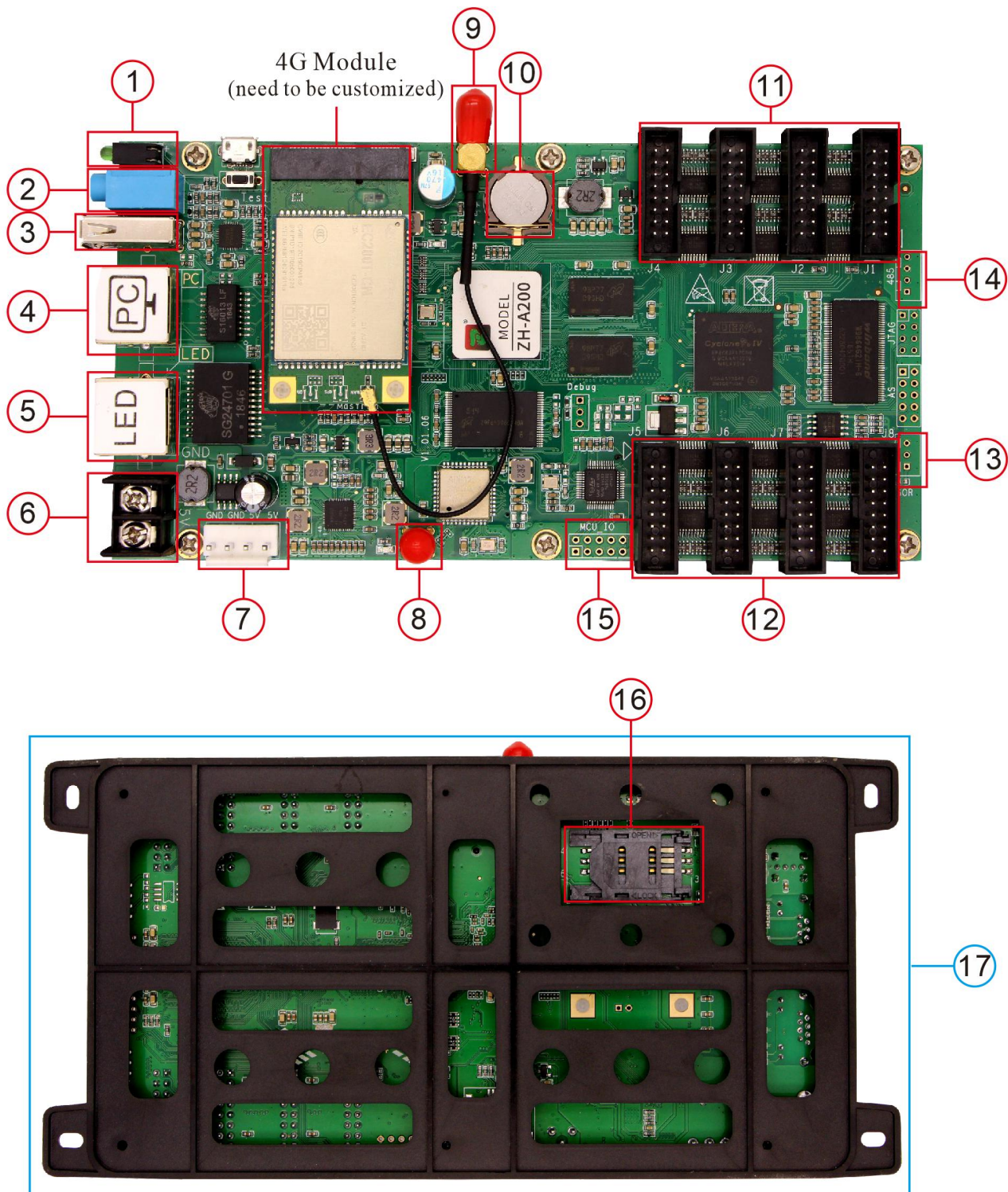
### LED Load Parameters:

1. Support 8 pieces hub 75E standard ports;
2. Support one Network port to cascade receiving cards, support maximum pixel within 640\*480;
3. Supports control area 512\*480;



## III. Input/Output Port Arrangement and Definition

### Hardware Introduction:





## Note Instructions:

1. Power supply and work indicator
2. Audio output port;
3. USB port;
4. 100M Network port, connecting to computer, router or switcher, used for communication;
5. 1000M (1G) Network port, used for connect with receiving card;
6. 5V power port;
7. 5V power port;
8. WIFI antenna port;
9. 3/4G antenna port(default air welding, optional);
10. Battery port, used for saving clock settings;
11. 4 pieces Hub 75E port, supporting 32 scan;
12. 4 pieces Hub 75E port, supporting 32 scan;
13. Sensor port;
14. RS485 port;
15. I/O port, used for expansion or control;
16. SIM Card port;
17. Card board;

## Working Conditions:

Rated Voltage (V)	5.0	Maximum	6	Minimum	4
Rated Current (A)	1.5	Maximum	3.2	Minimum	0.8A
Rated Power Consumption (W)	7.5	Maximum	16	Minimum	4
Temperature limit (°C)		Maximum	80	Minimum	-40
Working Environment Temperature (°C)		Maximum	80	Minimum	-40
Working Environment Humidity(%)		Maximum	95	Minimum	0

## IV. Machine Size Diagram:

